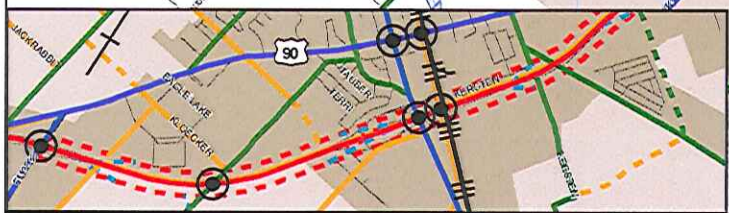
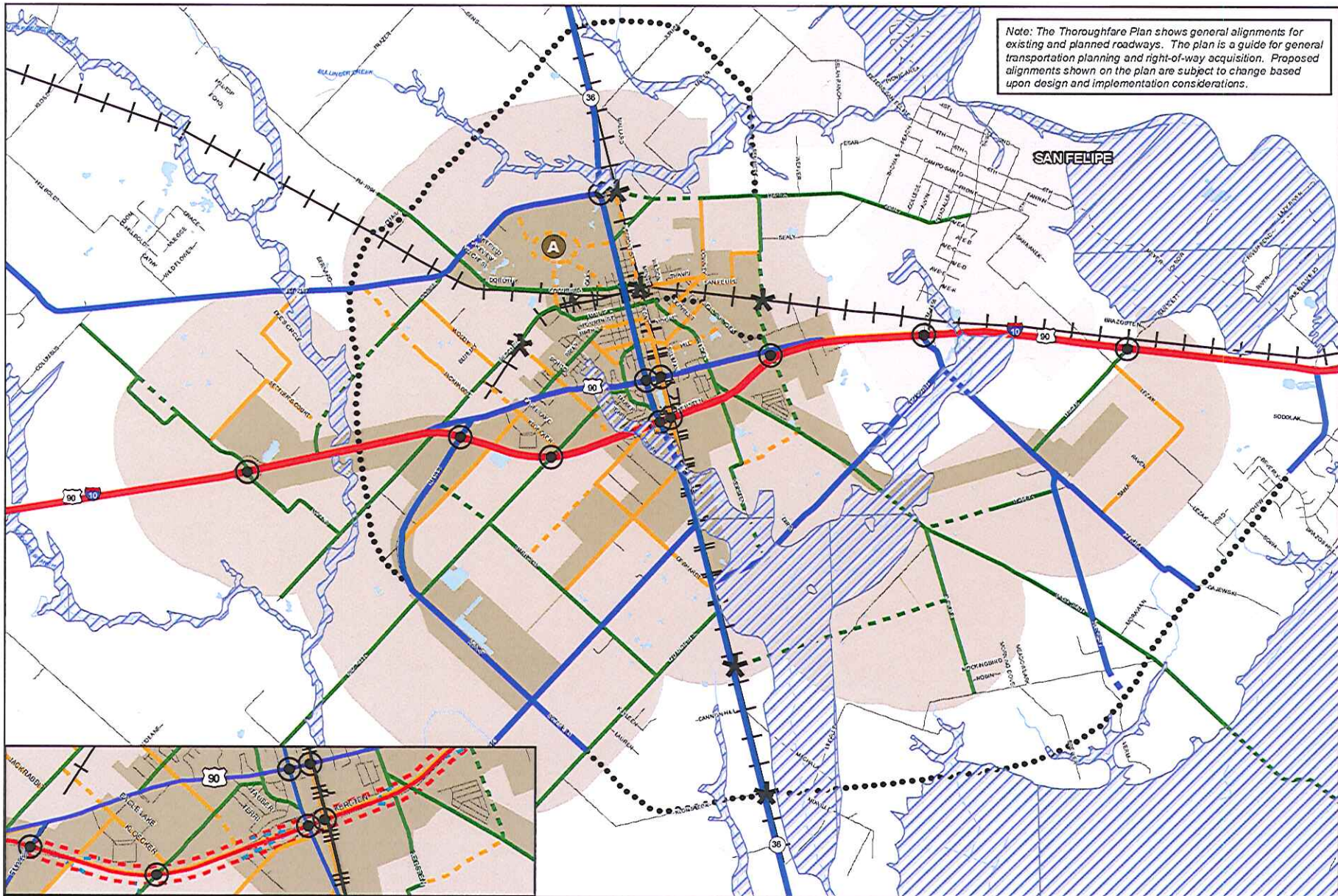


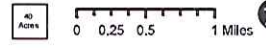
Note: The Thoroughfare Plan shows general alignments for existing and planned roadways. The plan is a guide for general transportation planning and right-of-way acquisition. Proposed alignments shown on the plan are subject to change based upon design and implementation considerations.



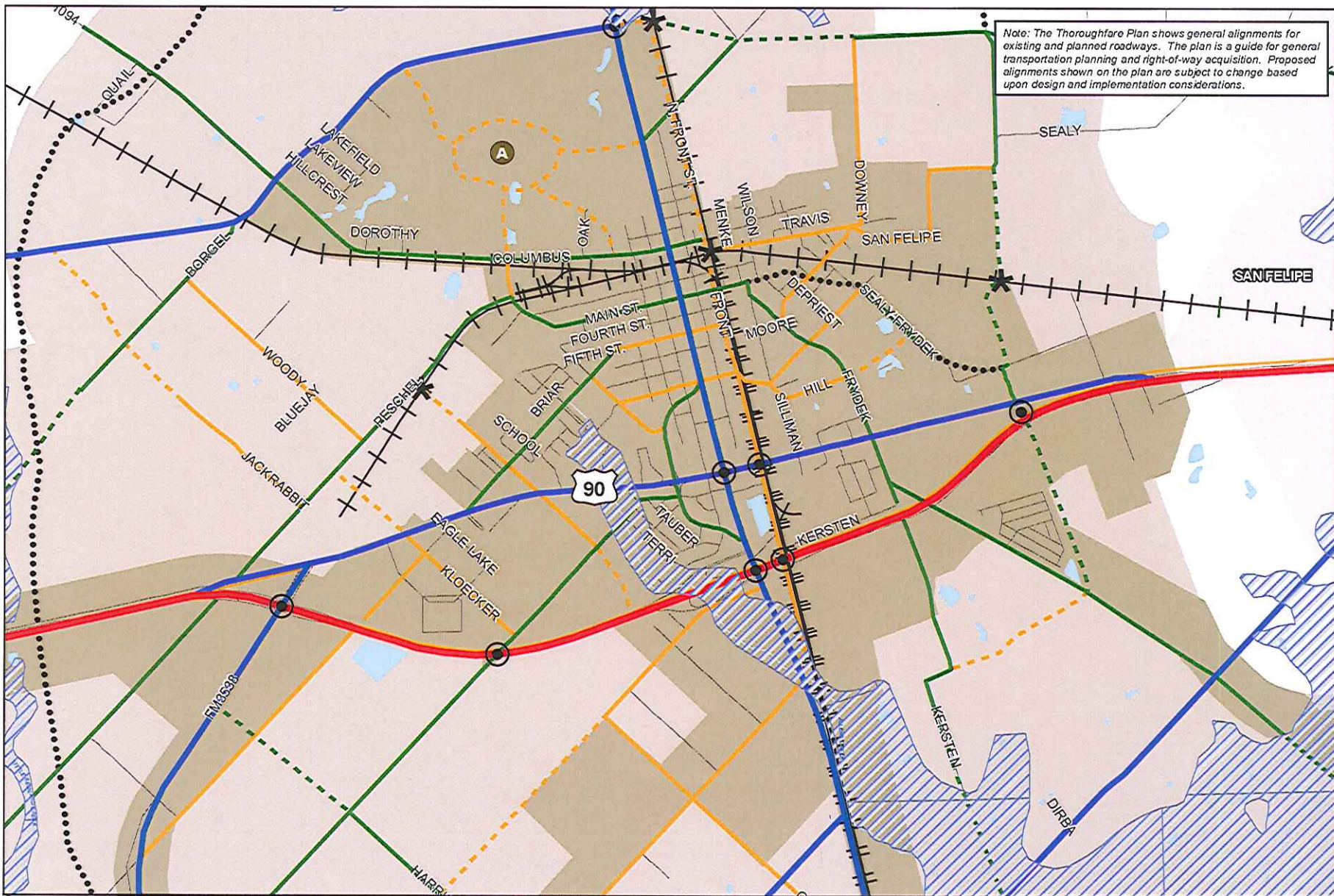
Thoroughfare Plan

- Grade Separation
- Major Arterial
- Collector
- Extrateritorial Jurisdiction (ETJ)
- Railroad Crossing
- Proposed Major Arterial
- Proposed Collector
- FEMA 100-Year Flood
- Expressway
- Minor Arterial
- Special Concept Alignment for Further Study
- Railroad
- Proposed I-10 Frontage Roads
- Proposed Minor Arterial
- City Limits

A Concept Collector. As a policy, collectors should be used to provide internal connectivity within a "superblock". Collectors in primarily residential areas should not provide straight continuous routes between arterials. However they should align with other arterial and collector streets at appropriate locations on the arterial network for signalized intersections.



MAP
4.1 A

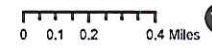


Note: The Thoroughfare Plan shows general alignments for existing and planned roadways. The plan is a guide for general transportation planning and right-of-way acquisition. Proposed alignments shown on the plan are subject to change based upon design and implementation considerations.

Thoroughfare Plan

- Grade Separation
- Railroad Crossing
- Expressway
- Proposed I-10 Frontage Roads
- Major Arterial
- Proposed Major Arterial
- Minor Arterial
- Proposed Minor Arterial
- Collector
- Proposed Collector
- Special Concept Alignment for Further Study
- City Limits
- Extraterritorial Jurisdiction (ETJ)
- FEMA 100-Year Flood
- Railroad

A Concept Collector. As a policy, collectors should be used to provide internal connectivity within a "superblock". Collectors in primarily residential areas should not provide straight continuous routes between arterials. However they should align with other arterial and collector streets at appropriate locations on the arterial network for signalized intersections.



MAP

4.1 B

