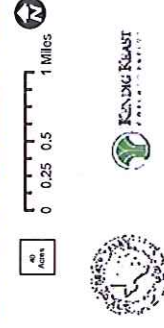
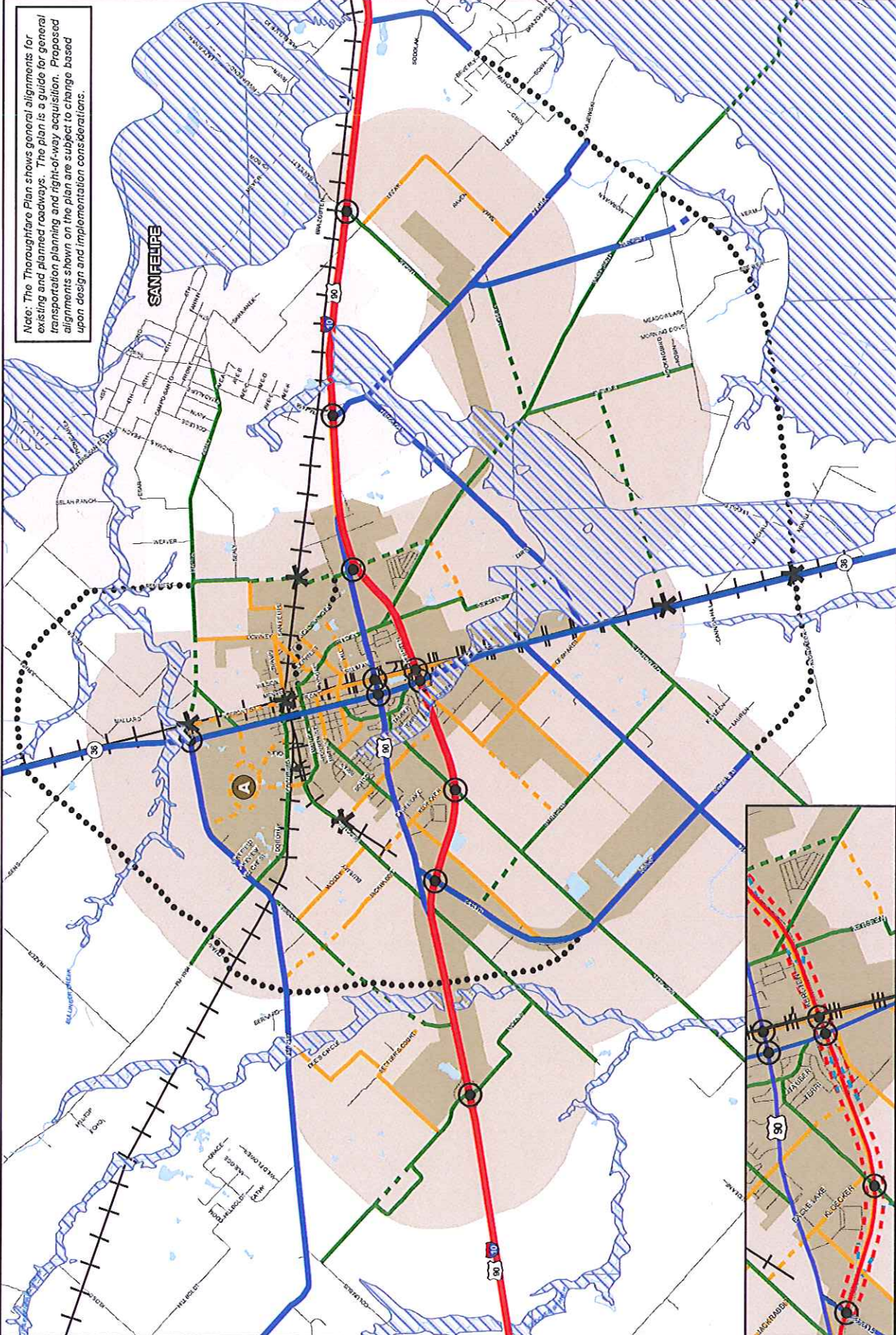


Note: The Thoroughfare Plan shows general alignments for existing and planned roadways. The plan is a guide for general transportation planning and right-of-way acquisition. Proposed alignments shown on the plan are subject to change based upon design and implementation considerations.



Concept Collector. As a policy, collectors should be used to provide internal connectivity within a "superblock". Collectors in primarily residential areas should not provide straight continuous routes between arterials. However they should align with other arterial and collector streets at appropriate locations on the arterial network for signalized intersections.

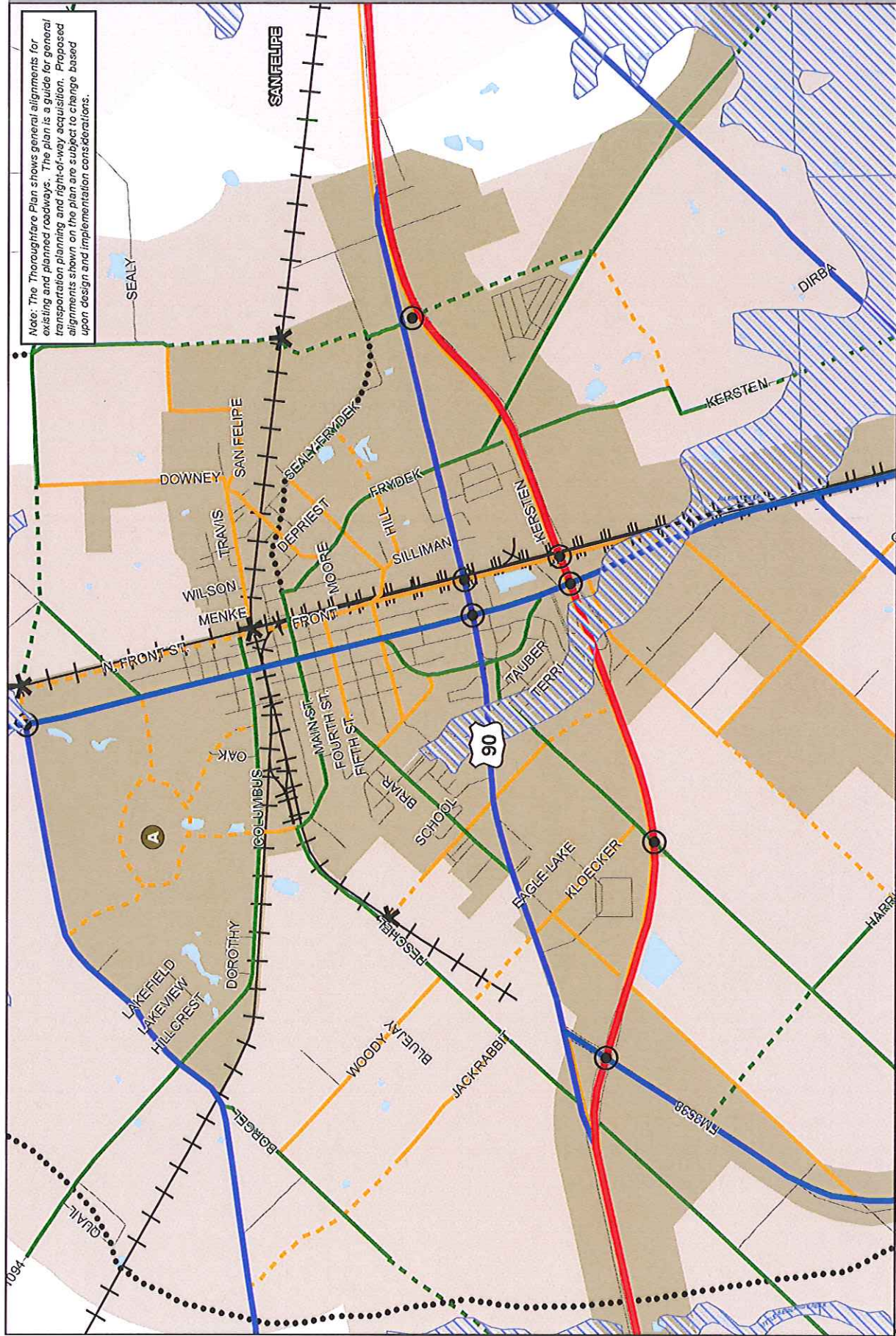
Extrajurisdictional Jurisdiction (ETJ)

FEMA 100-Year Flood

Railroad

- Thoroughfare Plan**
- Collector
  - Grade Separation
  - Railroad Crossing
  - Expressway
  - Proposed 1-10 Frontage Roads
  - Major Arterial
  - Proposed Major Arterial
  - Minor Arterial
  - Proposed Minor Arterial
  - City Limits
  - Special Concept Alignment for Further Study

Note: The Thoroughfare Plan shows general alignments for existing and planned roadways. The plan is a guide for general transportation planning and right-of-way acquisition. Proposed alignments shown on the plan are subject to change based upon design and implementation considerations.



- Thoroughfare Plan**
- Major Arterial
  - Collector
  - Proposed Major Arterial
  - Proposed Collector
  - Minor Arterial
  - Special Concept Alignment for Further Study
  - Proposed Minor Arterial
  - City Limits
  - Grade Separation
  - Railroad Crossing
  - Expressway
  - Proposed I-10
  - Frontage Roads

- Extrajurisdictional Jurisdiction (EJJ)
- FEMA 100-Year Flood
- Railroad

**A** Concept Collector: As a policy, collectors should be used to provide internal connectivity within a "superblock". Collectors in primarily residential areas should not provide straight continuous routes between arterials. However they should align with other arterial and collector streets at appropriate locations on the arterial network for signalized intersections.

0 0.1 0.2 0.4 Miles